



The Leader in Trace Mineral Nutrition

Position Statement

Method of Identifying Zinpro Products in Premixes, Feeds

Purpose of Using Tracers

To assure that Zinpro Corporation customers are receiving Zinpro products in their feeds as they have specified.

Procedures

Below is a step-by-step description of how the Microtracer Rotary Detector functions. Please refer to Zinpro's Tracer Sampling and Analysis Guidelines (Position Statement G-1012) for a detailed explanation of procedures for sampling, analysis, interpretation of results and follow-up communications.

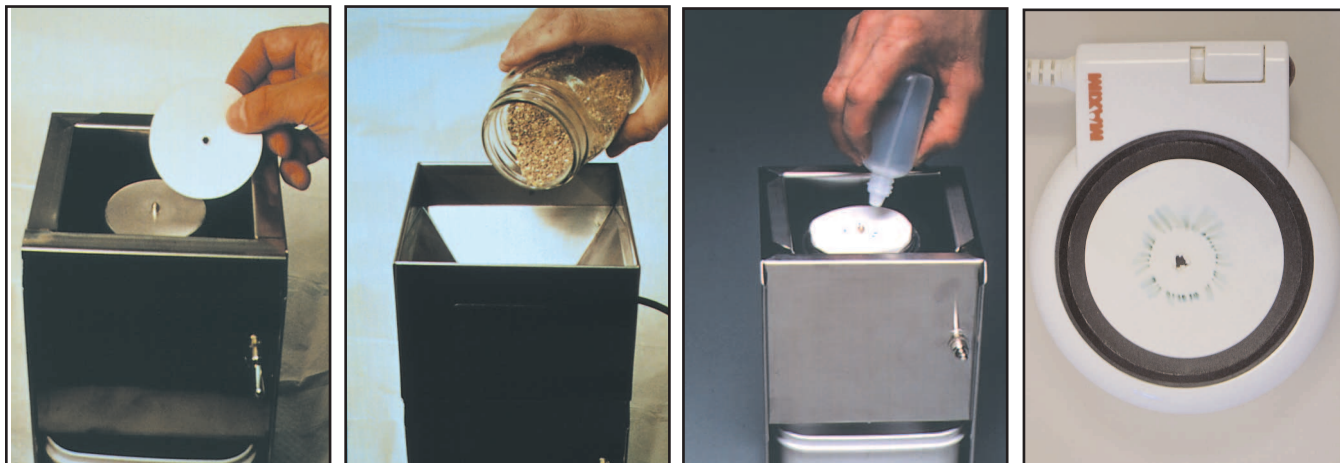
Recommendation

We recommend that premix, supplement and/or concentrate feed samples be sent directly to Zinpro Corporation for tracer analysis.

Mailing Address:

Zinpro Corporation
Attention: Judd Nelson
Quality Control Manager
6375 415th Street
North Branch, MN 55056

Microtracer® Rotary Detector Technique



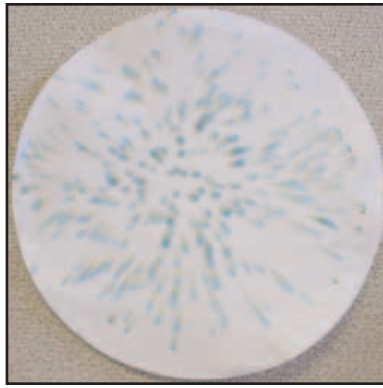
Materials Required

1. Scale suitable for weighing 500 grams of feed.
2. Whatman No. 1 filter paper, 9.0 cm in diameter.
3. Coffee mill or Osterizer (for grinding pelleted product).
4. Developing solution.
5. Mug warmer or hot plate.
6. Microtracer Rotary Detector.

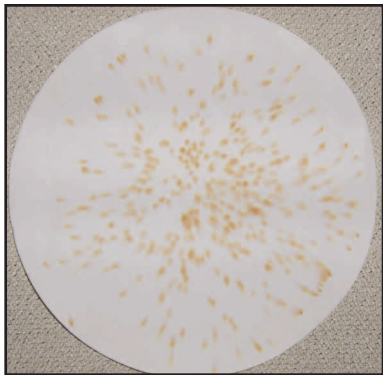
Testing Procedure

1. Turn on mug warmer or hot plate (250-300°F or 120-150°C).
2. Weigh 500 grams of feed (grind if in pelleted form).
3. Place filter paper on spindle of rotary magnet.
4. Turn on Rotary Detector.
5. Transfer sample of feed to the Rotary Detector's top hopper.
6. After hopper is empty, turn off Rotary Detector. Remove top hopper.
7. Add 10-15 drops of developing solution to the center of the filter paper. Let it diffuse outward through the ring of trapped microtracer particles.
8. Remove filter paper from rotary magnet with spatula or small knife.
9. Place filter paper on mug warmer or hot plate. Check filter paper for colored spots of microtracer.

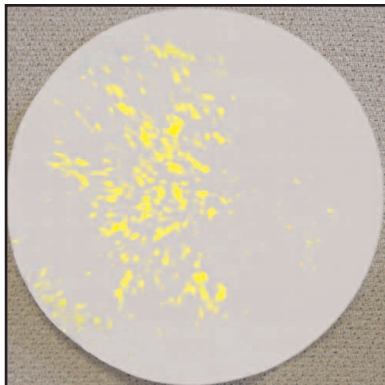
Filter Color Spots of Three Specific Tracers



**ZINPRO® zinc methionine,
4-Plex®
Microtracer F-Green/Yellow
Developer: 100% water**



**Availa®Mins
Microtracer F-Red/Yellow
Developer: 100% water**



**MiCroPlex®
Microtracer F-Yellow-Lake
Developer: 7% solution of sodium
carbonate in water**

Positive Analysis: Positive detection of tracers shows which Zinpro product was added in the formulation of that feed.

Inconclusive Analysis: No tracers detected. Warrants further sampling and analysis of the feed.